




# Installation and Operating Manual

---

**Model F1800C**  
**Model F1800PG**  
**Model F1802C**  
**Model F1802PG**  
**Model F1806C**  
**Model F1806PG**

## Contents

Safety Warnings 	2
Items supplied.....	3
Description.....	3
Installation.....	4
Operation.....	4
Maintenance.....	4
Troubleshooting.....	5
Technical Data.....	5
Part Numbers.....	6
Warranty.....	6
Contact Information.....	6

---

## Safety Warnings

For safe and successful operation of this equipment, please read this user guide completely. If the instructions stated herein are not observed or followed, the manufacturer cannot assume responsibility for any harm or damage to the operator or equipment. Please retain this manual for future reference.

Always disconnect the power supply before servicing the equipment.

Do not operate this equipment without filter inserts as contaminants in the extracted air will damage the blower. Use only filters recommended or supplied by IP Systems.

The F1800 is designed for the removal of fumes and gases only. Consult your company's Safety Department when using this equipment for filtering flammable gases. This equipment is not explosion safe and can **only** be used for the extraction of vapors that have concentration level well below the lower explosive limit.

Consult your Safety Department if the concentration level of fumes exceed the permissible "safety limit" as set by your local authority in order to ensure that the equipment is adequate for your application.

The blower motor of this equipment is protected with an automatic thermal overload device and will restart automatically after the motor has cooled down.

This equipment is to be repaired only by IP Systems or its authorized Service Representative while it is under warranty.

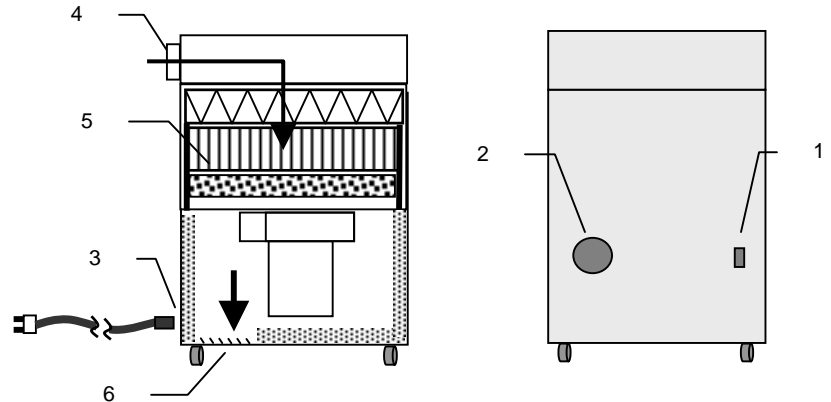
## Items supplied

- 1 - Filter unit with filters installed
- 1 - Power cord (110VAC or 230VAC)
- 1 - User Guide

## Description

### Parts and Functions

- (1) On / Off switch
- (2) Filter Monitor (Differ. Pressure Gauge)
- (3) Power inlet and circuit breaker
- (4) Air inlet - port sizes vary by model number.
- (5) Filters
- (6) Air outlet



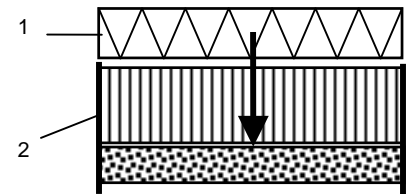
### Model Variations

Model Number	Power Supply	Filtration
F1800C	115 VAC, 60 Hz	Pre / HEPA / Gas
F1800PG	115 VAC, 60 Hz	Pre / HEPA / Deep-Bed Gas
F1802C	230 VAC, 60 Hz	Pre / HEPA / Gas
F1802PG	230 VAC, 60 Hz	Pre / HEPA / Deep-Bed Gas
F1806C	230 VAC, 50 Hz	Pre / HEPA / Gas
F1806PG	230 VAC, 50 Hz	Pre / HEPA / Deep-Bed Gas

*HEPA = Highly Efficient Particulate Arrestor*

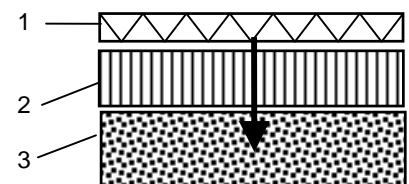
Models with Pre / HEPA / Gas filtration:

Supplied with a Pre-filter (1) and a Combination-filter (HEPA / Gas) (2). These models are designed for the removal of solder, laser-, and other fumes which have a high particulate content.



Models with Pre / HEPA / Deep-Bed Gas filtration:

Supplied with a Pre-filter (1), a HEPA filter (2) and a high capacity Gas-filter (3). These models are designed for a highly efficient filtration of gases, odors as well as particulates.



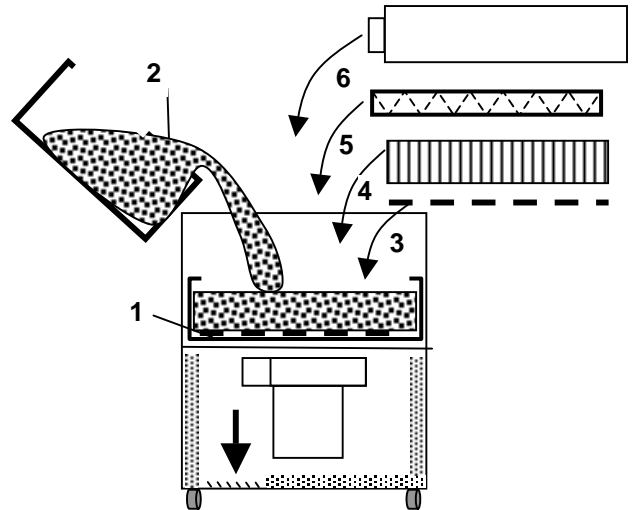
**⚠** For use on "flammable" gases refer to "Safety Warnings" above.

## Installation

### Set-Up

**⚠ Do not operate Models F1800PG, F1802PG and F1806PG before removing shipping box of carbon from inside of unit.**

- Filling of carbon tray on Models F1800G, F1802G and F1806G
  - Open up unit and remove pleated filter (5) and HEPA filter (4).
  - Remove box filled with bulk carbon located inside metal tray.
  - Open box and place one blue filter mat onto bottom of metal tray (1).
  - Pour carbon (2) from bag into tray and distribute carbon evenly in tray.
  - Place second blue mat (3) on top of carbon.
  - Place HEPA filter (4) on top of carbon tray and then pleated Prefilter (5).
  - Place lid (6) back on unit and close latches.



Note: the above steps are not necessary on Models F1800C, F1802C and F1806C. These units have a Combi-Filter HEPA/Carbon.

- Position equipment in the work area and make sure there is ample access to the unit for filter maintenance.
- Connect extraction hoses to the air inlets.
- Connect the power cord to the equipment and to a grounded wall socket.
- Follow operating and maintenance procedures stated in this user guide.

## Operation

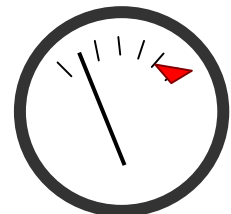
**⚠ Do not operate the equipment without installing filters. Unfiltered air contaminants may damage motor bearings and other components. Use only factory recommended filters.**

- Switch (1) turn the equipment ON / OFF
- Monitor gauge (2) for filter condition

## Maintenance

### Filter Replacement Timing

- Models F1800C / F1802C / F1806C with Pre / HEPA-Carbon filters
  - When the gauge needle falls into the red marked field, it is time to change filters.  
Change pre-filter first. If the needle of the analog gauge remains near to the "red" mark, also replace the HEPA/Carbon filter.
- Models with Pre / HEPA / Deep-Bed Gas filter
  - When the gauge needle falls into the red marked field, it is time to change the particulate filters.  
Change pre-filter first. If the needle of the analog gauge remains near to the "red" mark, also replace the HEPA filter.
  - When odor is noticeable in the exhaust air, change the carbon of the gas-filter.



## Filter Replacement Procedure

- Turn equipment off and disconnect the power source
- Unlatch the lid of the filter unit
- Remove the lid
- Replace filters
- Place lid back on and close the latches
- Reconnect to power source and turn unit on

*Always use new replacement filters from the original manufacturer! Do not try to clean the filters!*

## Filter Disposal

Keep “used” filters in disposable bags or closed containers to avoid contamination of other areas. While the filter material is none-hazardous, the contaminants captured inside the filter may be hazardous. Please consult the MSDS sheets for the material used at your facility and follow the prescribed handling instructions. Follow your local regulations for disposal of used filters.

## Troubleshooting

Problem	Possible Cause	Check and Correction
Equipment does not turn on	No power	Check ON / OFF switch Check power cord connections and integrity Check circuit breaker (at rear of unit) Automatic thermal overload stopped the motor. Wait until motor has cooled down.
Minimum air flow	Air leak	Check lid for properly closure and latching
	Air blockage	Check extraction hose for any blockage Check filter monitor for filter saturation

## Technical Data

<b>Model No.</b>	<b>F1800C</b> (F1802C)	<b>F1800PG</b> (F1802PG)	<b>F1806C</b>	<b>F1806PG</b>
Fan capacity	700 cfm	700 cfm	900 m3/h	900 m3/h
System capacity	400 cfm	300 cfm	600 m3/h	500 m3/h
Max. Static Pressure	4.8" WG	4.8" WG	1075 Pa	1075 Pa
HEPA efficiency	99.97% at 0.3mic	99.97% at 0.3mic	H12 (DIN EN 1822)	H12 (DIN EN 1822)
Carbon capacity	5.5 lbs	22 lbs	2.5 kg	10 kg
Power supply	115VAC, 60 Hz	115VAC, 60 Hz	230VAC, 50Hz	230VAC, 50Hz
(F1802C+G)	(230VAC, 60 Hz)	(230VAC, 60 Hz)		
Motor power (input)	450 Watt	450 Watt	450 Watt	450 Watt
Noise level *	58 - 64 dBA	58 - 64 dBA	58 - 64 dBA	58 - 64 dBA
Dimensions (w/d/h mm)	17.5"/19.5"/29.75"	17.5"/19.5"/29.75"	445/495/755mm	445/495/755mm
Weight, approx.	110 lbs	120 lbs	50 kg	54 kg

\* Notice: The noise level varies with number of exhaust ports in use or amount of airflow.

## Part Numbers

---

### Filter Units

F1800C	Filter Unit Pre / HEPA / Gas, 400 cfm, 115VAC/ 60Hz
F1800PG	Filter Unit Pre / HEPA / Deep-Bed Gas, 300 cfm, 115VAC/ 60Hz
F1802C	Filter Unit Pre / HEPA / Gas, 400 cfm, 230VAC/ 60Hz
F1802PG	Filter Unit Pre / HEPA / Deep-Bed Gas, 300 cfm, 230VAC/ 60Hz
F1806C	Filter Unit Pre / HEPA / Gas, 400 cfm. 230VAC/ 50Hz
F1806PG	Filter Unit Pre / HEPA / Deep-Bed Gas, 300 cfm, 230VAC/ 50Hz

### Replacement Filters

For Models F1800C / F1802C / F1806C

Fil18P040 Pre-filter Pleated 60% efficiency (2/pack)

Fil18H070 Combination Filter HEPA - Carbon

For Models F1800PG / F1802PG / F1806PG

Fil18P020 Pre-filter Pleated 60% efficiency (2/pack)

Fil18H020 HEPA filter 99.97% efficiency at 0.3 micron

Fil18G020 Carbon Refill Kit 22lbs (10 kg)

## Warranty

---

IP Systems warrants the F1800 Series against any defects in materials or workmanship for one (1) year from the date of purchase by the original owner. This warranty excludes filters, normal maintenance, and shall not apply to any opened, misused, abused, altered or damaged items. If the product should become defective within the warranty period, IP Systems will repair or replace it free of charge at its sole discretion. The repaired or replacement item(s) will be shipped, freight prepaid, to the original purchaser. The warranty period will start from the date of purchase. If the date of purchase cannot be substantiated the date of manufacture will be used as the start of the warranty period.

For repair or return of the equipment anytime, a Return Material Authorization Number (RMA #) must be obtained from IP Systems. Customer ships to factory "freight prepaid" – "collect" shipments are not accepted. IP Systems pays for return freight.

## Contact Information

---

For Sales and Customer Care

IP Systems, LLC  
50-A Satellite Blvd NW  
Suwanee, GA 30024  
USA  
Phone: 770-614-7701  
Fax: 770-614-7707  
[sales@ipsystemsusa.com](mailto:sales@ipsystemsusa.com)  
[www.ipsystemsusa.com](http://www.ipsystemsusa.com)